

POS Under New Ownership

We are pleased to announce an exciting change in ownership! Robertson Piper Software Group (RPSG) has purchased the Point-of-Sale business of CAM Commerce Solutions. RPSG is a holding company whose business is acquiring, managing and building enterprise software businesses. Their focus is to provide superior customer service, support and product quality for mission-critical software solutions. This acquisition by RPSG will allow us to focus squarely on the POS software solutions that are so critical to your business.

You should have received an e-mail announcement of this acquisition, along with an FAQ that will cover some questions you may have. Here are some highlights:

What About X-Charge?

RPSG acquired CAM Commerce's Point-of-Sale business. This includes POS development, training, sales & support operations, and the Retail STAR, CAM32, MicroBiz and Profit\$ software products.

The X-Charge payment processing business was not acquired by RPSG and will remain with the previous owners. Going forward, the X-Charge payment processing business and the CAM Commerce business will be separate entities with different owners.

However, we will continue to work closely with the X-Charge payment processing business as a partner and one of its largest resellers.

Is This a Good Thing?

This is a win-win situation! Both businesses can now focus on what they do best.

What Changes?

At this time RPSG has no immediate plans to introduce sweeping changes to customer support.

- CAM support still available at 800-949-1470
- Website still available at www.camcommerce.com

Who Can I Talk To?

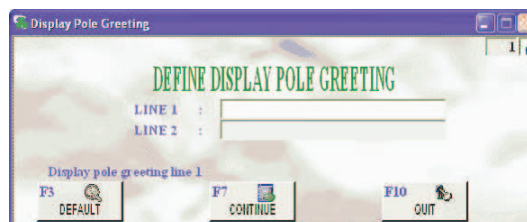
If you have not received the e-mail communication from us, email cammanager@camcommerce.com to request the information.

Customizing Your Display Pole Message

Did you know that in version 6.07 you have the ability to customize your pole display message for point of sale?

Changing the Display Pole Message

To change the message that shows on the display pole at POS, go to **System Definition > Define Point of Sale > Define Operator Stations**. Click on the **F8 POS MESSAGE** button, and the Display Pole Greeting window will display.



From here you can enter up to 20 characters per line, then click **F7 CONTINUE** to return to the Point of Sale Options screen. Be sure to click **F1 SAVE** to save your entries.

To revert back to the default display pole greeting, click **F3 DEFAULT**, **F7 CONTINUE**, and then **F1 SAVE**.

NOTE: The default message is *WELCOME* on the top line and *READY TO SERVE YOU!* Is on the bottom line.

Current Software Versions

Current General Release Software:

CAM32 6.07
X-Charge 7.1.1 *NEW!*

To obtain CAM32 upgrade CD(s), login to the CAM32 Communities at www.camcommerce.com and click the link at the top of the web board to submit a CD request. Or, call Support to request the CD.

Support can also provide your web board login information, available for all users currently on a support contract.

If using X-Charge, upgrading to version 7 is required with CAM32 6.07 and is included on the CAM32 upgrade CD for your convenience.