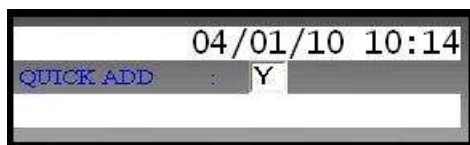


Adding Items Using Mass Add Templates

The Mass Add program can be used to speed up the process of adding multiple new items to the Inventory file by selecting specific fields where data will remain the same for each item added and will need to be entered only once rather than item by item.

Setting Up Templates

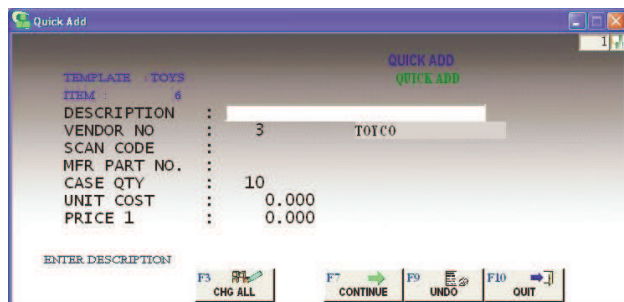
You can setup the templates through **Inventory File Maintenance**, then pressing **F1 Add**. From there choose **F3 Temp #**. You can then highlight the desired template and press **F2** to change it. Any field you mark here is a field you will be prompted to add when adding items with mass add. At this point, you can also set this template's **Quick Add** flag to **Y**. It is in the top right-hand corner.



The Difference between Quick Add Y and N

Set to N: When adding new items using Mass Add, the template looks like the inventory maintenance screen and all fields are available, but as you fill in the field and press <enter> the cursor lands in the next "marked" field.

Set to Y: When adding new items using Mass Add, the Quick Add screen comes up. This screen doesn't look like the inventory maintenance screen. Instead, only the marked fields from the template show up on this form. They do not have to be filled in but these are the only fields listed.



Using Mass Add

From the **Inventory File Maintenance** screen, select **F1 Add**, then press **F3 TEMP #** to select the template that you wish to use when adding items through Mass Add.

TMPL#	TEMPLATE NAME
1	DEFAULT TEMPLATE
2	TOYS
3	BOOKS

Then select **F2 MASS ADD** to begin adding new items with your template.



Current Software Versions

Current General Release Software:

CAM32 6.07
X-Charge 7.1.1 *NEW!*

To obtain CAM32 Upgrade, login to the CAM32 Communities at www.camcommerce.com and click the link at the top of the web board to submit a CD request. Or, call Support to request the CD.

If using X-Charge, upgrading to version 7 is required with CAM32 6.07 and is included on the CAM32 upgrade CD for your convenience.

Helpful Contacts

Supplies

- Email: supplies@camcommerce.com
- Phone: 800-CAM-DATA
- Fax: 714-241-0145

Training

- Phone: 866-442-1887

Installation

- Phone: 800-949-1460