

Customizing the Appearance of CAM32

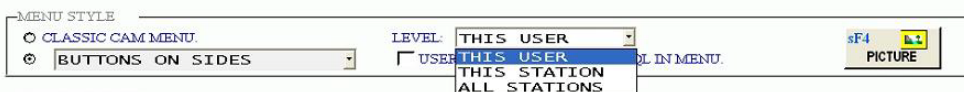
Did you know you can customize the appearance of CAM32? You can change the logo, background and even fonts. This month we will look at how you can visually customize CAM32 to your own personal specifications.

Defining Your Logo,

Define Logo and Sound Controls is used to customize your logo, menu, and even the sound controls as you enter and exit the CAM32 system. This menu is accessible under *System Definitions* from the Main Menu.



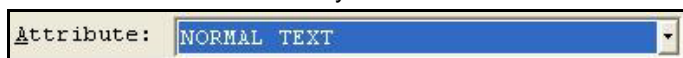
Directly below the logo is the path where it is located. Click on F2 BROWSE to go directly to the CAM32 Pictures directory to view and select from a list of default logos. You can also insert your own logo in this directory using JPG, BMP, GIF, or PNG files.



From this screen you can also change the menu style. You can select *Classic Cam Menu*, or by clicking the radio button in the combo box and selecting from the drop down list, you can select other styles including *Buttons on Sides*, *Large Buttons*, *Links on Right*, etc. You can also set the level of use for these changes to *This User* (Individual logons must be used for this selection), *This Station*, or *All Stations*.

Defining the Background Using Color Manager

Click on the CAM32 Icon in the top-left corner of the Main Menu and select *Color Manager*. From here you can define the foreground and background screen colors or image, as well as 3D effects for each of system attribute.

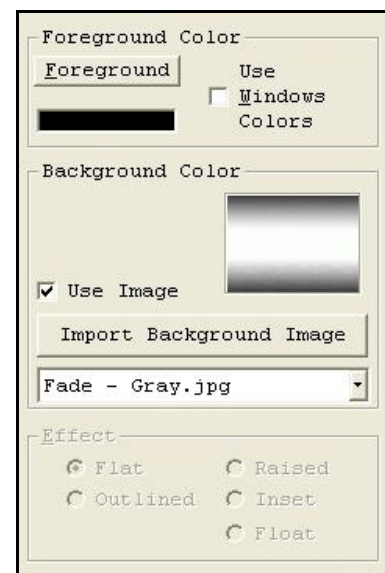


System attributes are selected from the Attribute pull down menu.



The current selected attribute setting is displayed at the top-left of the window.

You can change the foreground and/or background colors for the selected attribute by clicking on either Foreground or Background button. When you are on Normal Text, you may select the Background Color to use either the Windows Button Color, or an Image from the Image list box. The button color or the image appear in the rectangle to the right of the options (*shown right*). The list of images are stored in you CAM32 directory under PICTURES\BACKGROUNDS. You may add your own images or logos to this list by placing .GIF, .JPG, .PNG, or .BMP files in the Backgrounds folder.



Defining Fonts Using Font Manager

Click on the CAM32 Icon in the top-left corner of the Main Menu and select *Font Manager*. The Font Manager allows you to change fonts for the screen text, buttons, and button labels. (Additionally you can set the top and left margins on your laser printer.) All fonts loaded on your computer are available here. We recommend that you set the Weight and Width selection to "Auto" so that your font selection will work in every application