

MicroBiz Newsletter

September 2009



Still time to update X-Charge!

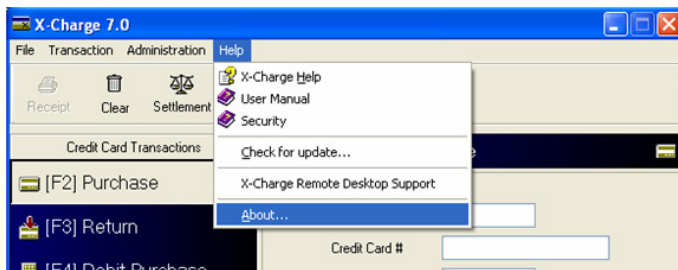
Mandatory X-Charge Update

Due to the high volume of merchants to comply with the new SSL security standards, we have been granted an extension of time in updating the X-Charge software. The new date has been set to **September 21st, 2009**. Update your X-Charge Software **TODAY** to ensure there is no interruption of payment card processing.

As part of an ongoing security enhancement initiative, Global Payments has recently announced a security upgrade which eliminates a specific communication protocol used by older versions of X-Charge. As a result, processing will be interrupted, unless you upgrade your X-Charge Software **TODAY**.

Checking your X-Charge Version

Your X-Charge version can easily be checked by opening up the X-Charge client and going to "Help" – "About." **If you are on any version other than 6.2.7 or 7.0.2, you will need to update your X-Charge software.**

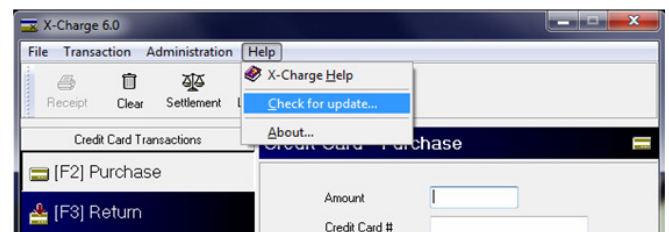


X-Charge Version 7.0.1
Credit Card Processor - GPN
Gift Card Processor - Datamark
CAM Commerce Solutions
Copyright 2000-2009

***Note** – For more detailed instructions on this mandatory X-Charge Update, please visit the X-Charge update website: www.x-charge.com/upgrade or call X-Charge Technical Support @ (800) 338-6614.

Updating X-Charge

X-Charge can be updated by opening up the X-Charge client and going to "Help" – "Check for Updates." You must have an internet connection to use this option. Depending on your current version, X-Charge will automatically detect if you need to update to 6.2.7 or 7.0.2. Follow the prompts to automatically download and install. Beware that when this install is complete, it will require the computer to be restarted. This must be done on all stations that have an X-Charge client icon on the desktop.



- If you are on a version prior to 6.2.7 and you do not have the "Check for Updates" option, then you will need to follow the instructions in this link to download and install 6.2.7: <http://www.x-charge.com/upgrade/upgradingX-Charge1-4.asp>.

More About X-Charge 7.0.2

Using the "Check for Updates" option in X-Charge is the quickest and easiest way to ensure that you are on a compliant version of X-Charge and are able to process credit cards after the September 1st, 2009 deadline. It is essential that this be done as soon as possible. If you are on a version prior to 6.2.7, X-Charge will detect and install version 6.2.7. If you would like to prepare early for the next version of MicroBiz, please contact MicroBiz Support @ **800-929-8324** for instructions on downloading and installing version 7.0.2. When MicroBiz 13.5 is released, it will be taking the next step to be more PCI Compliant by offering XPressLink – which will require X-Charge version 7.0.2.

MicroBiz Tech Support (800) 929-8324
Sales Office (800) 937-2289

Please send newsletter feedback to:
editor@camcommerce.com